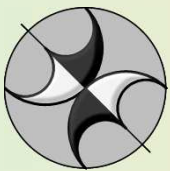


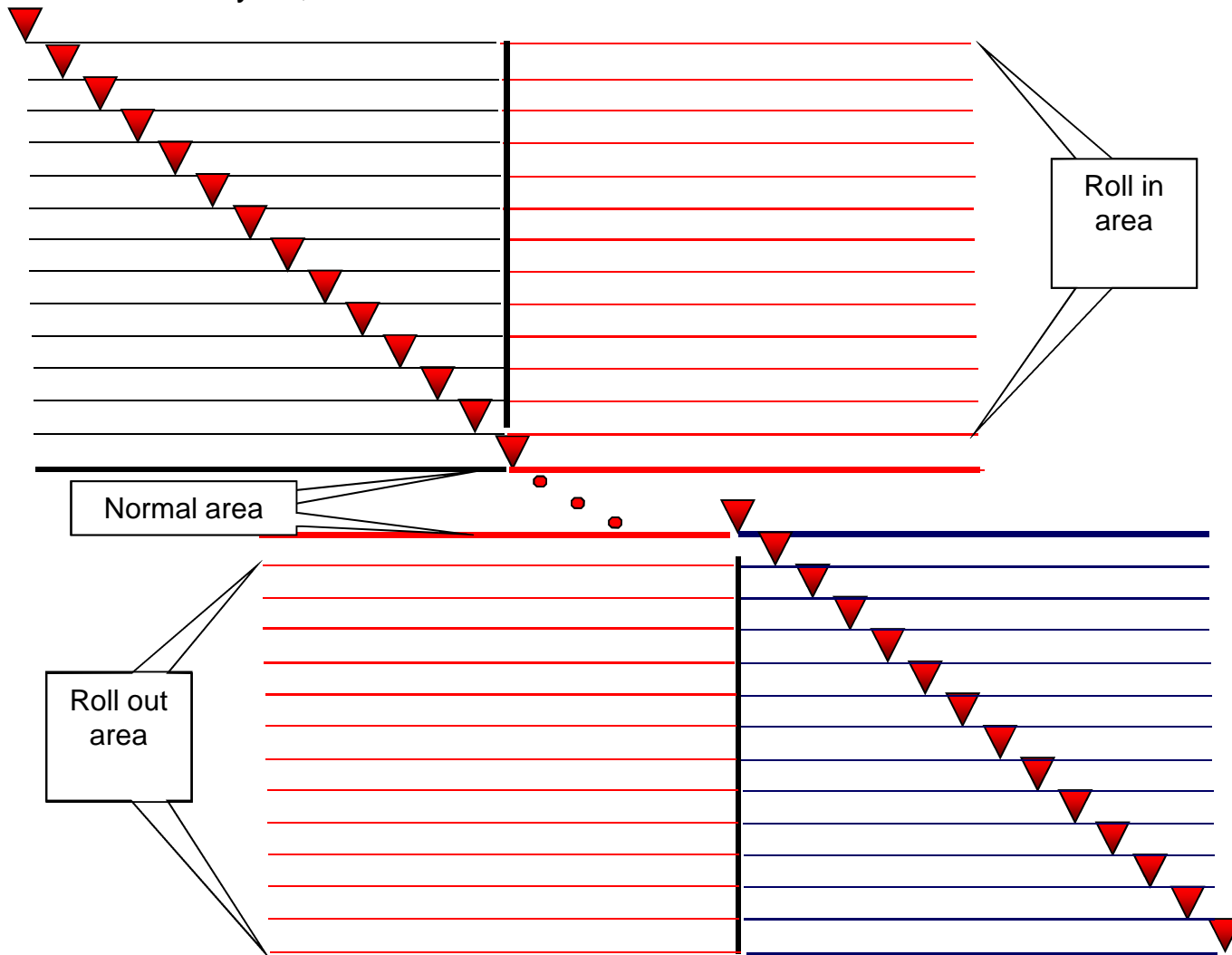
Roll-In -Out Survey Modeling



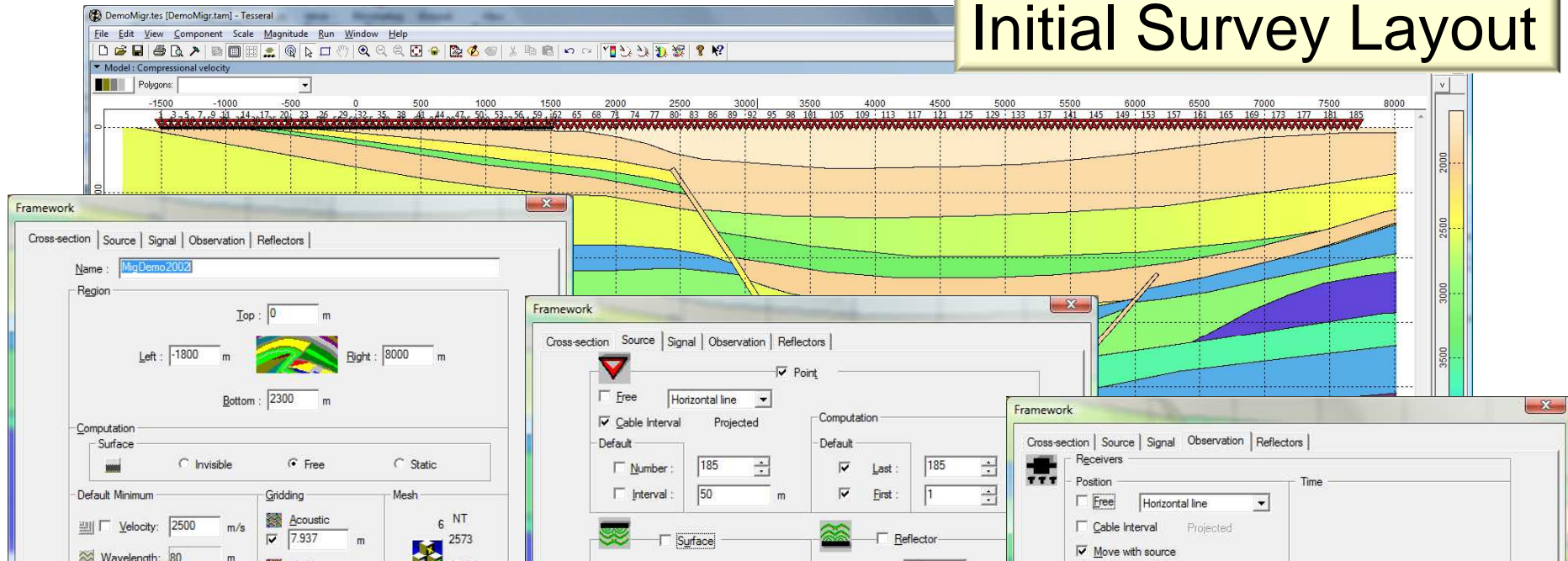
www.tesselal-geo.com

Modeling the seismic survey as:

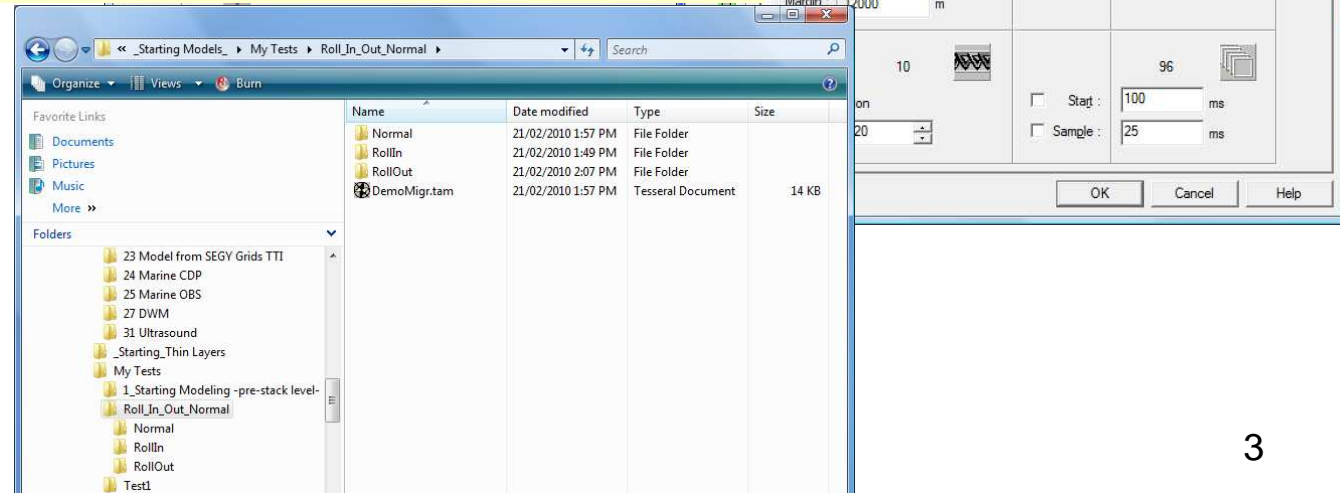
1. **Roll in area** the receiver layout is fixed but the shots are moved one by one until to the formal place it is located in the middle of layout.
2. In the **Normal area** is typical midpoint symmetry observation and move with source.
3. **Roll out area** the receiver layout also is fixed but the shots are moved one by one until to the end of the layout,



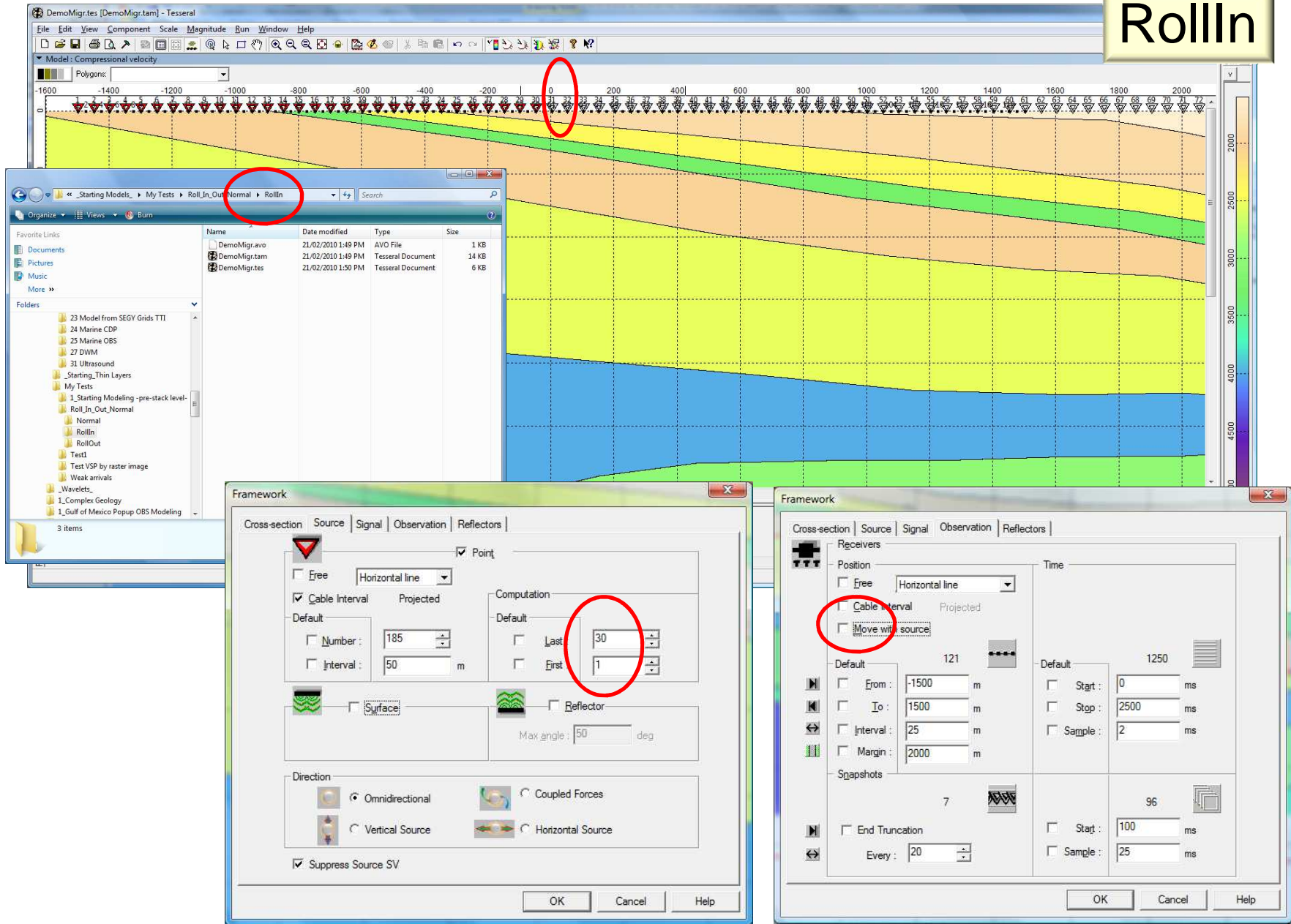
Initial Survey Layout



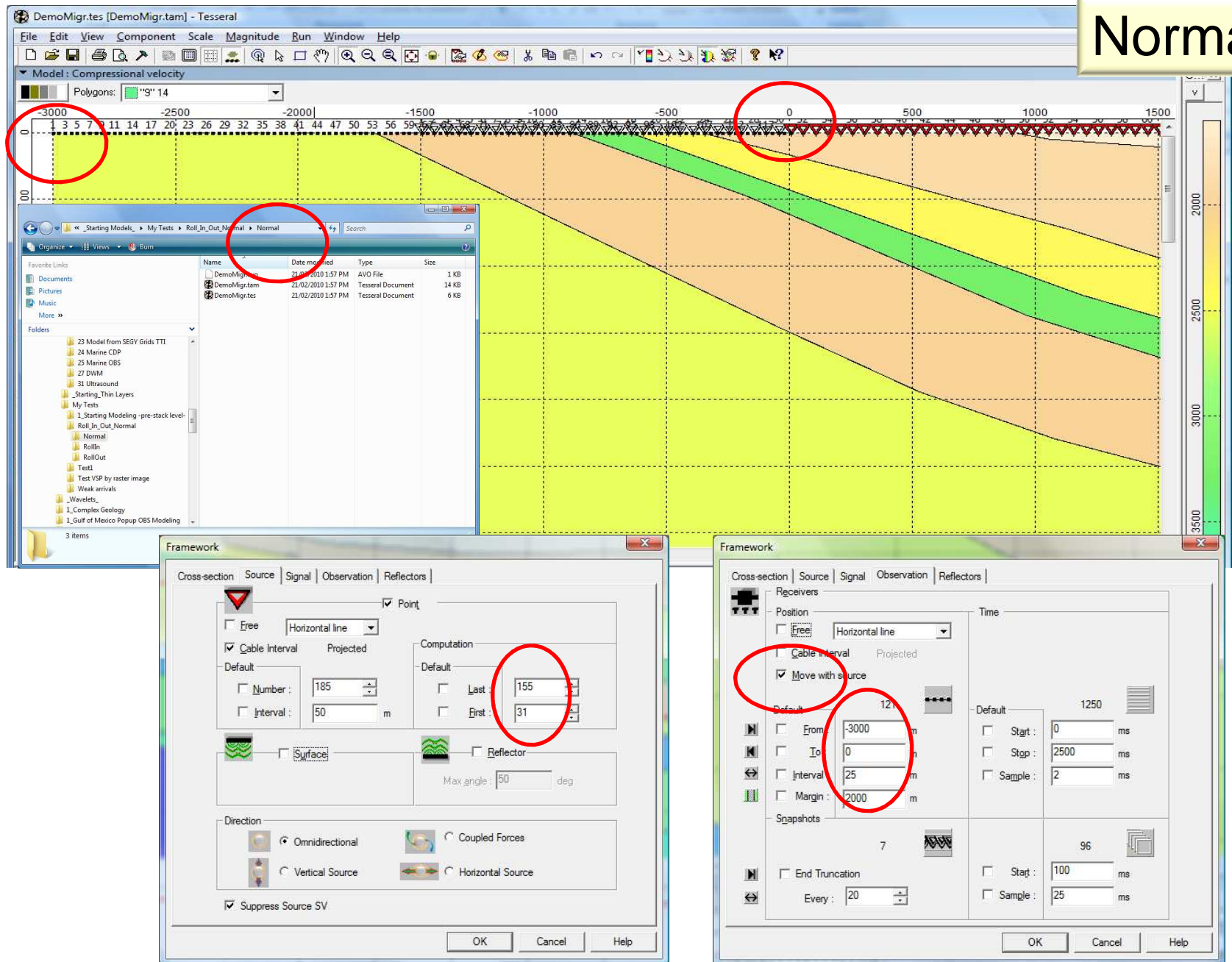
Then let split survey into three pieces:
Create subfolders /RollIn, /Normal and /RollOut



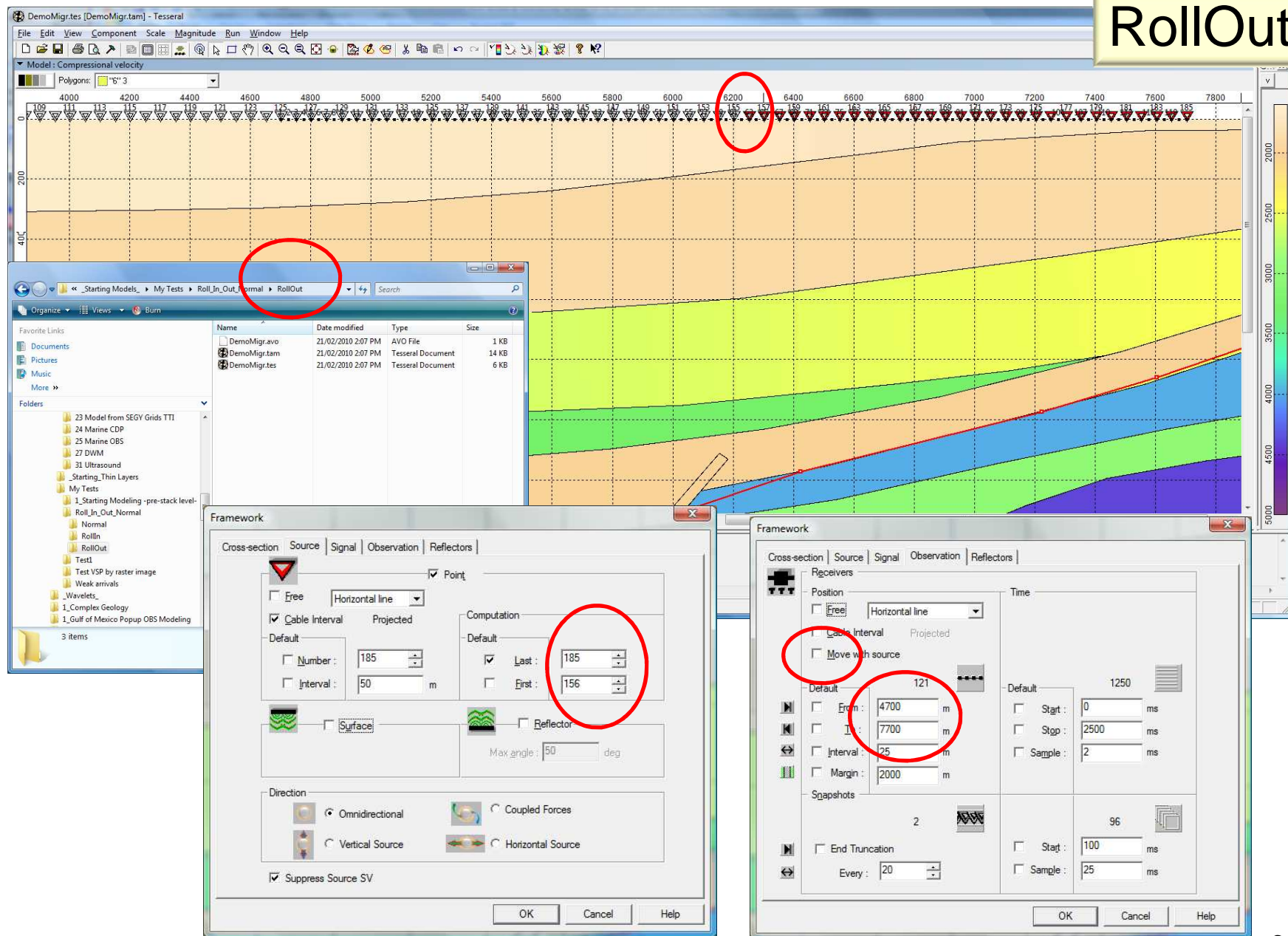
RollIn



Normal



RollOut

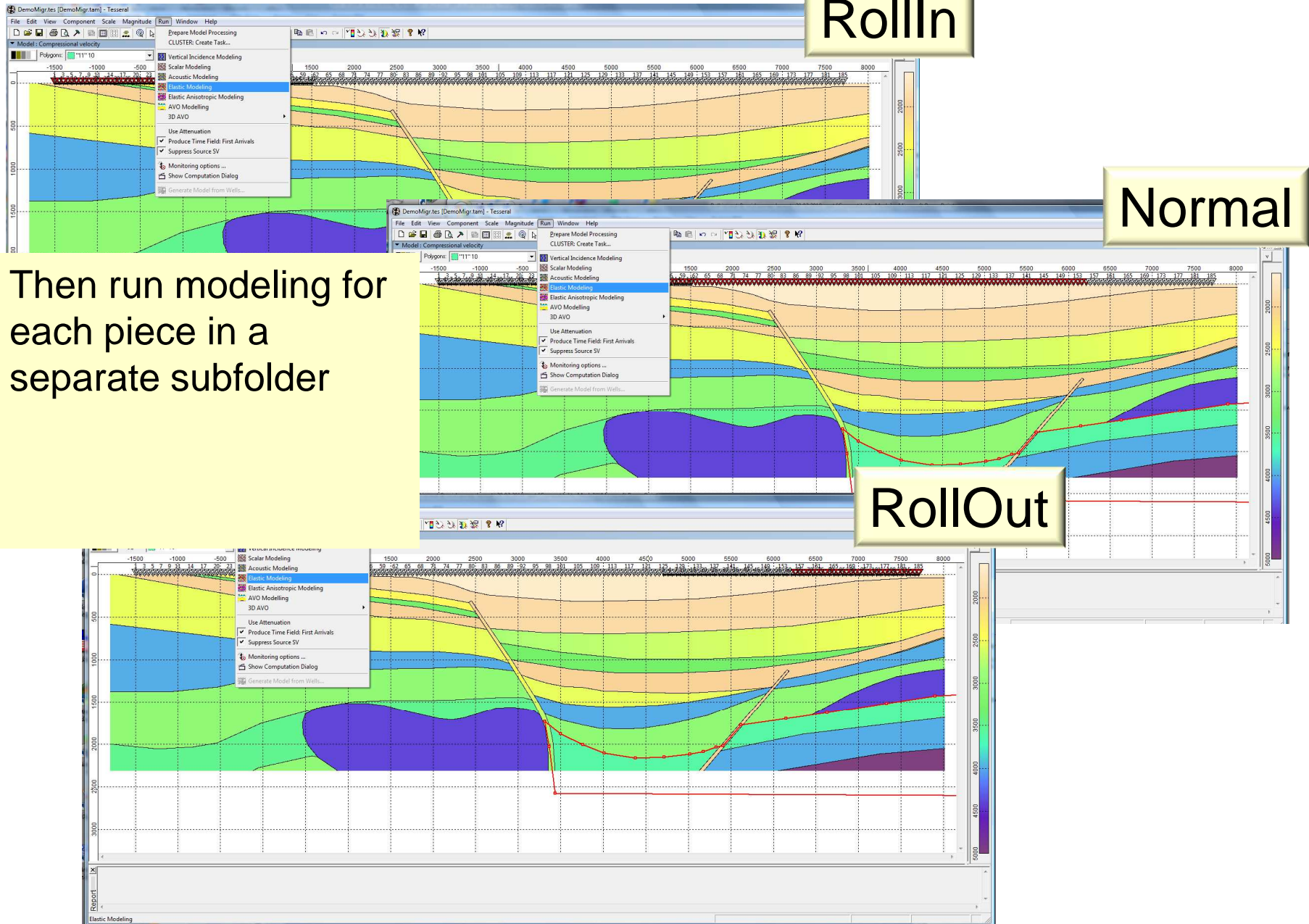


RollIn

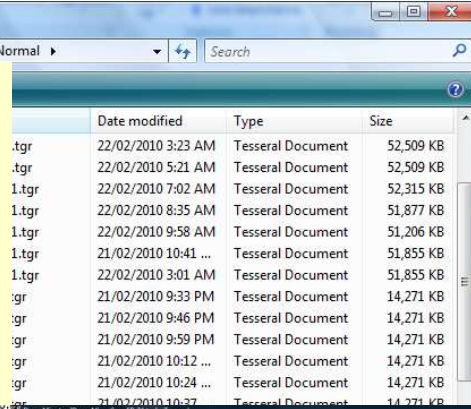
Normal

Then run modeling for each piece in a separate subfolder

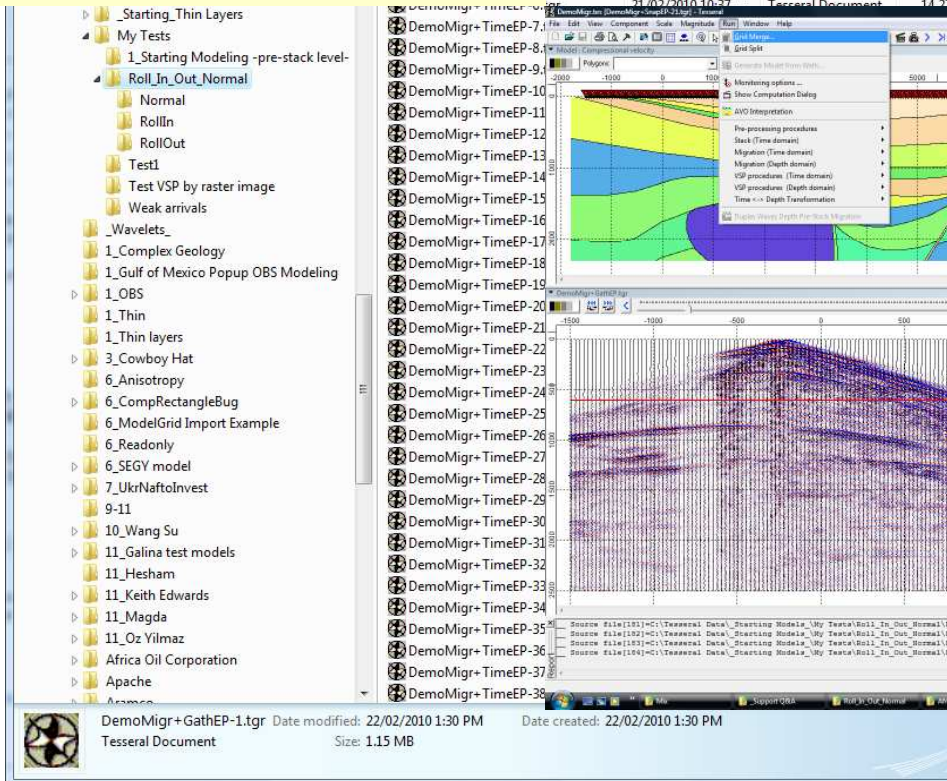
RollOut



Then move results from each subfolder into the folder and merge them as usual



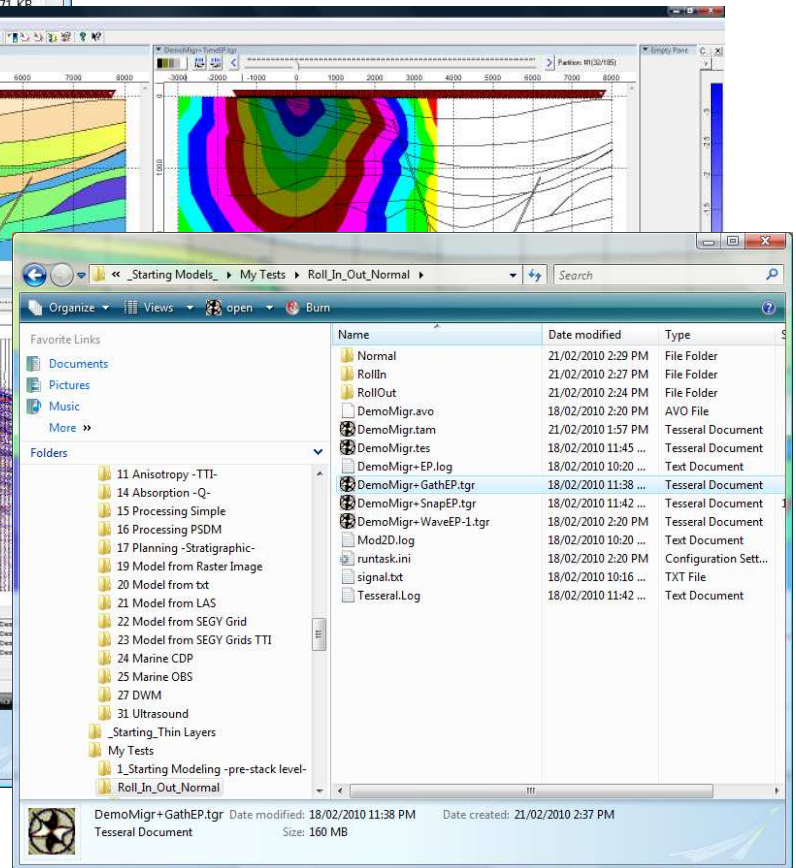
	Date modified	Type	Size
.tgr	22/02/2010 3:23 AM	Tesseral Document	52,509 KB
.tgr	22/02/2010 5:21 AM	Tesseral Document	52,509 KB
1.tgr	22/02/2010 7:02 AM	Tesseral Document	52,315 KB
1.tgr	22/02/2010 8:35 AM	Tesseral Document	51,877 KB
1.tgr	22/02/2010 9:58 AM	Tesseral Document	51,206 KB
1.tgr	21/02/2010 10:41 ...	Tesseral Document	51,855 KB
1.tgr	22/02/2010 3:01 AM	Tesseral Document	51,855 KB
.igr	21/02/2010 9:33 PM	Tesseral Document	14,271 KB
.igr	21/02/2010 9:46 PM	Tesseral Document	14,271 KB
.igr	21/02/2010 9:59 PM	Tesseral Document	14,271 KB
.igr	21/02/2010 10:12 ...	Tesseral Document	14,271 KB
.igr	21/02/2010 10:24 ...	Tesseral Document	14,271 KB
.tgr	21/02/2010 10:27 ...	Tesseral Document	14,271 KB



DemoMigr+TimeEP-7
DemoMigr+TimeEP-8
DemoMigr+TimeEP-9
DemoMigr+TimeEP-10
DemoMigr+TimeEP-11
DemoMigr+TimeEP-12
DemoMigr+TimeEP-13
DemoMigr+TimeEP-14
DemoMigr+TimeEP-15
DemoMigr+TimeEP-16
DemoMigr+TimeEP-17
DemoMigr+TimeEP-18
DemoMigr+TimeEP-19
DemoMigr+TimeEP-20
DemoMigr+TimeEP-21
DemoMigr+TimeEP-22
DemoMigr+TimeEP-23
DemoMigr+TimeEP-24
DemoMigr+TimeEP-25
DemoMigr+TimeEP-26
DemoMigr+TimeEP-27
DemoMigr+TimeEP-28
DemoMigr+TimeEP-29
DemoMigr+TimeEP-30
DemoMigr+TimeEP-31
DemoMigr+TimeEP-32
DemoMigr+TimeEP-33
DemoMigr+TimeEP-34
DemoMigr+TimeEP-35
DemoMigr+TimeEP-36
DemoMigr+TimeEP-37
DemoMigr+TimeEP-38

Source file(121)=C:\Tesseral Data\Starting Models\My Tests\Roll_In_Out_Normal\DemoMigr+TimeEP-1.tgr
Source file(122)=C:\Tesseral Data\Starting Models\My Tests\Roll_In_Out_Normal\DemoMigr+TimeEP-2.tgr
Source file(123)=C:\Tesseral Data\Starting Models\My Tests\Roll_In_Out_Normal\DemoMigr+TimeEP-3.tgr
Source file(124)=C:\Tesseral Data\Starting Models\My Tests\Roll_In_Out_Normal\DemoMigr+TimeEP-4.tgr

DemoMigr+GathEP-1.tgr Date modified: 22/02/2010 1:30 PM Date created: 22/02/2010 1:30 PM
Tesseral Document Size: 1.15 MB



Name	Date modified	Type
Normal	21/02/2010 2:29 PM	File Folder
RollIn	21/02/2010 2:27 PM	File Folder
RollOut	21/02/2010 2:24 PM	File Folder
DemoMigr.avo	18/02/2010 2:20 PM	AVO File
DemoMigr.tam	21/02/2010 1:57 PM	Tesseral Document
DemoMigr.tes	18/02/2010 11:45 ...	Tesseral Document
DemoMigr+EP.log	18/02/2010 10:20 ...	Text Document
DemoMigr+GathEP.tgr	18/02/2010 11:38 ...	Tesseral Document
DemoMigr+SnapEP.tgr	18/02/2010 11:42 ...	Tesseral Document
DemoMigr+WaveEP-1.tgr	18/02/2010 2:20 PM	Tesseral Document
Mod2D.log	18/02/2010 10:20 ...	Text Document
runtask.ini	18/02/2010 2:20 PM	Configuration Sett...
signal.txt	18/02/2010 10:16 ...	TXT File
Tesseral.Log	18/02/2010 11:42 ...	Text Document

DemoMigr+GathEP.tgr Date modified: 18/02/2010 11:38 PM Date created: 21/02/2010 2:37 PM
Tesseral Document Size: 160 MB

End of Presentation