



Installing ...

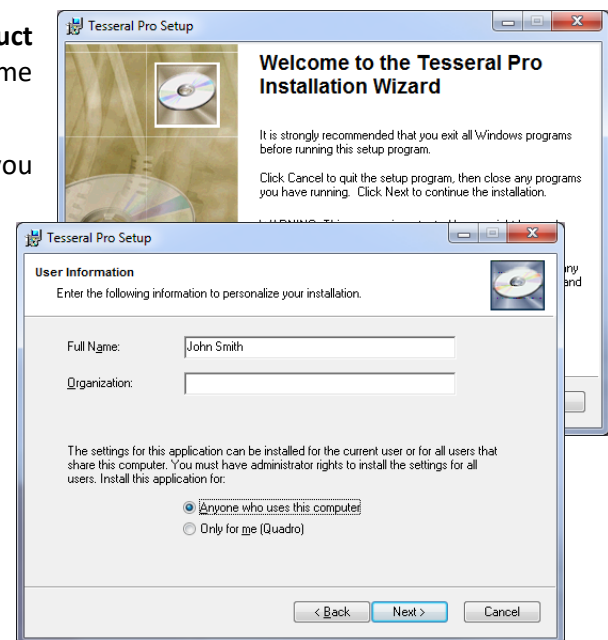
... of **Tesseral Geo Modeling Suite** requires installing of **Windows Workplace product (2D and/or Pro)**, and corresponding *parallel computation modules*.

- From company's website <http://www.tesseral-geo.com> you can download:
- ✓ ... latest versions of the **Tesseral Products** using **page /Download**. You can also download **Samples Database** containing a set of *prebuilt models, templates and data samples* which can be useful at initial learning and application of the package.
- ✓ **User Documentation** using page **/Support**.
- ✓ For **other variants of Tesseral products** please refer to corresponding product tab at <http://www.tesseral-geo.com/support.en.php>.

... of Tesseral workplace for Windows

- **from supplied CD**: insert CD-ROM into your CD-ROM drive. If installation do not start automatically, please, look for file *Setup.exe* (or executable with similar name, usually in *SetUp/* folder).
- **from downloaded file**: to start the setup process, please unzip the file and then *run the executable*.
- ✓ If you have purchased the **USB-key license**, please do not insert your *USB key* before finishing the installation. The drivers for *USB key* will be set up during the installation.
- ✓ It is recommended to **uninstall previous versions of the same product** before installation of a new one. To uninstall package, you must activate icon **Control Panel |Add/Remove Programs**, choose item **Tesseral-*<variant>*** from the list and press button **Add/Remove**.
- ✓ Uninstalling previous version (of a product) **does not destruct licensing permissions** for corresponding versions with the same licensing period and level.
- **During the installation** conventional dialogs will appear where you can specify required information.
 - ✓ In the dialog **User Information** you may enter your name and make additional specifications.
 - ✓ If during installation you are **prompted to install SQL Server**, please read the following:

SQL Server is a standard program component provided by Microsoft for database services. There are different variants of SQL Server. *Tesseral-Pro* requires **SQL Server 2005 Express Edition or higher** which is included in the installation package. However, there are other prerequisites that may be required on some operation systems. Provided with this installation is a freeware variant. If installation **cannot find SQL Server in Windows system**, only in this case **you are prompted to install one provided** as a part of this installation. In some cases missing component must be downloaded and installed separately. Please, read corresponding message that may appear during installation:



- *Microsoft Native Client* - is a core of *general interfaces for databases*, in this case - an addition to SQL server. It is not a standard component of Windows, but frequently may already be installed for other programs.
- *.NET (DotNet)* - is a system program core utility interpreting low level macro commands for working with own (logical) objects and OLE-objects. .NET is a part of latest versions of Windows.

For downloads of above components and more information you can use company's website:

- *NET 2* (redistributable) package (for 32-bit or 64-bit systems);
- *Microsoft Native Client* (for 32-bit or 64-bit systems).

- **After installation is finished**, use menu *Start/All Programs/Tesseral* to access the **Tesseral** package executable (.exe). You can create its shortcut on your desktop or pin to taskbar.
 - Using of the package requires **obtaining license** from the *Tesseral Technologies*. The first time launched program is initially producing **the Registration dialog**. *Licensing for evaluation period* usually is done with alpha-digital key. There must be executed exchange of the outgoing (produced in the *Registration* dialog) code and incoming key (supplied by the company). Outgoing code from computer with installed package may be sent to the *Customer Service* e-mail support@tetrale.com . You can use dialog's **? Help** button or <http://www.tesseral-geo.com/support.en.php> tab */Installation and Licensing* for more information.
-